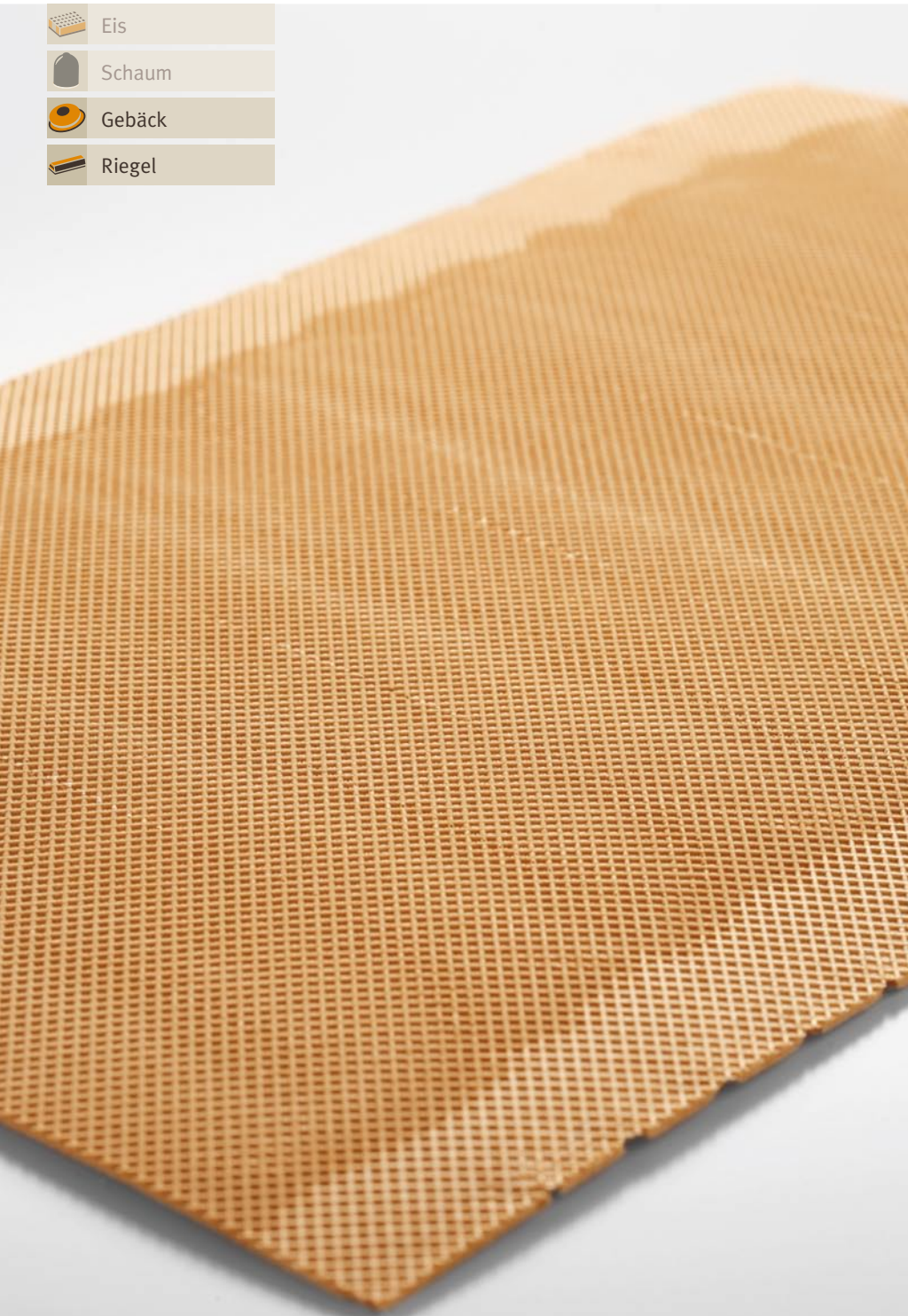




Typische Anwendung

-  Eis
-  Schaum
-  Gebäck
-  Riegel



Flachwaffel ■ **Flach (FW F)**

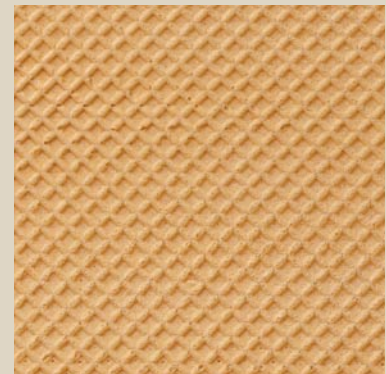
Blatt-Größe **ca. 290 x 460 mm**
 Blatt-Stärke **ca. 2,5 mm** (Standard)
 Blatt-Gewicht **ca. 55 g** (Standard)

Anwendungs-
 details **Lagenprodukt, Deckblatt,
 Zuschnitt, Rundwaffel**

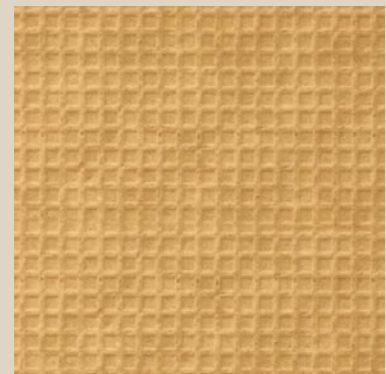
Anmerkung **Sonderausführung in
 Gewicht und Stärke
 möglich**

1:1 Abbildung

Vorderseite





Rückseite

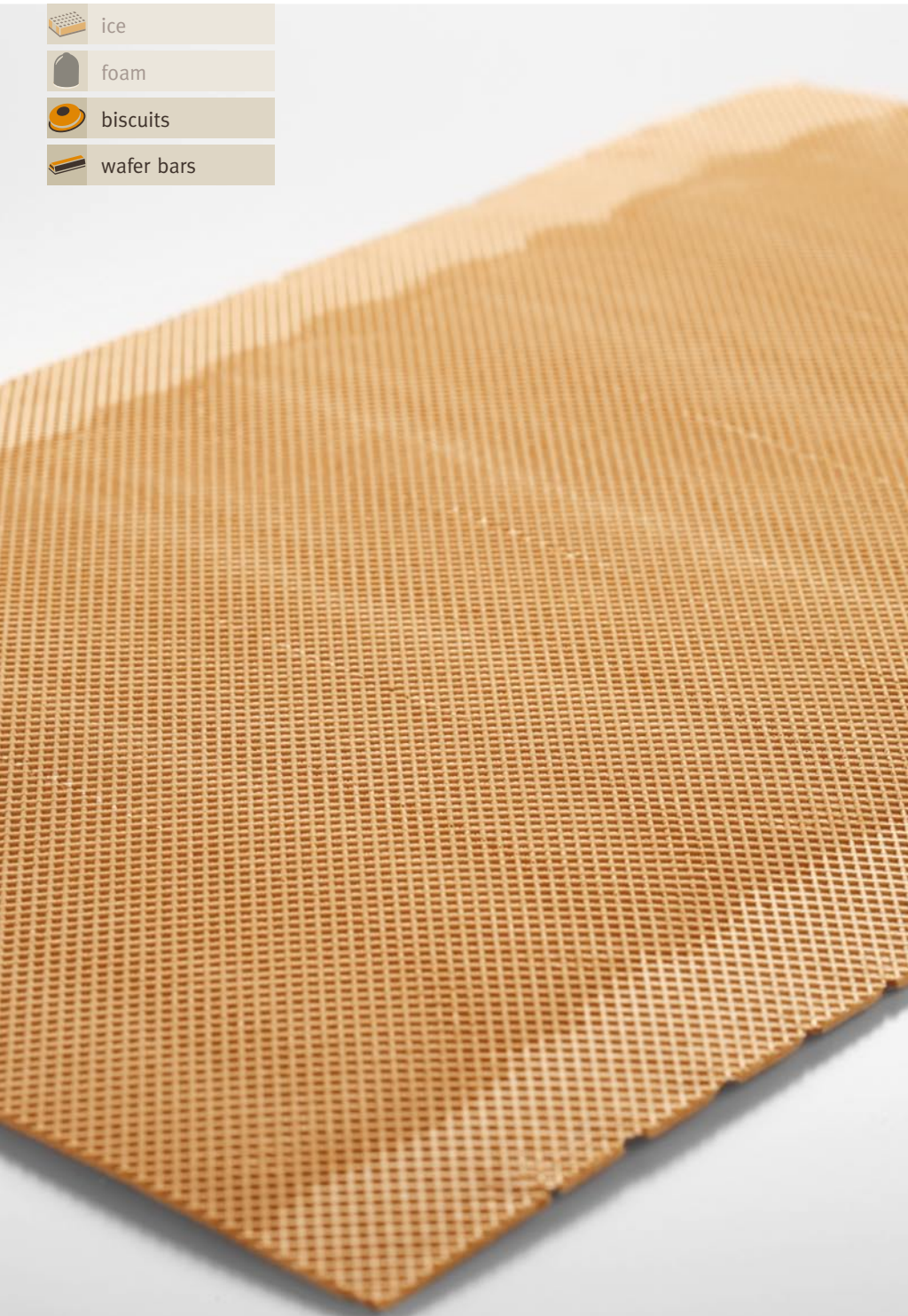


Tel. **+49 (0)6128 743-0**
 Fax **+49 (0)6128 73685**
www.waffel-loeser.de
info@waffel-loeser.de



typical usage

-  ice
-  foam
-  biscuits
-  wafer bars



Flat Wafer ■ Flat Profile (FW F)

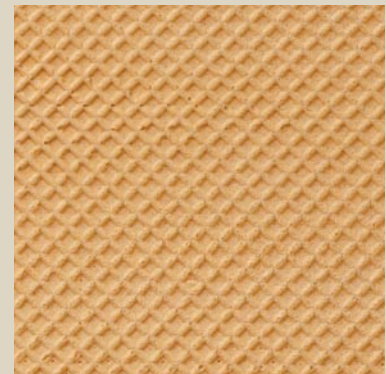
size of sheet **appr. 290 x 460 mm**
 thickness **appr. 2,5 mm** (standard)
 weight **appr. 55 g** (standard)

typical applications **cover sheet, wafer cut, round wafer, multi-layer product**

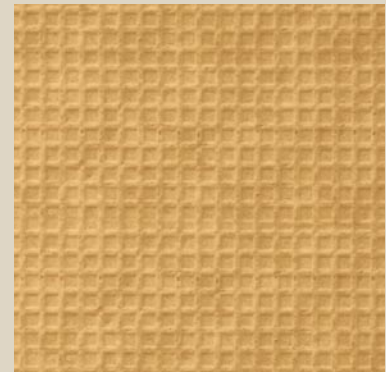
note **extra thickness and weight can be designed**

1:1 image

front side



back side



call **+49 (0)6128 743-0**
 fax **+49 (0)6128 73685**
www.waffel-loeser.de
info@waffel-loeser.de