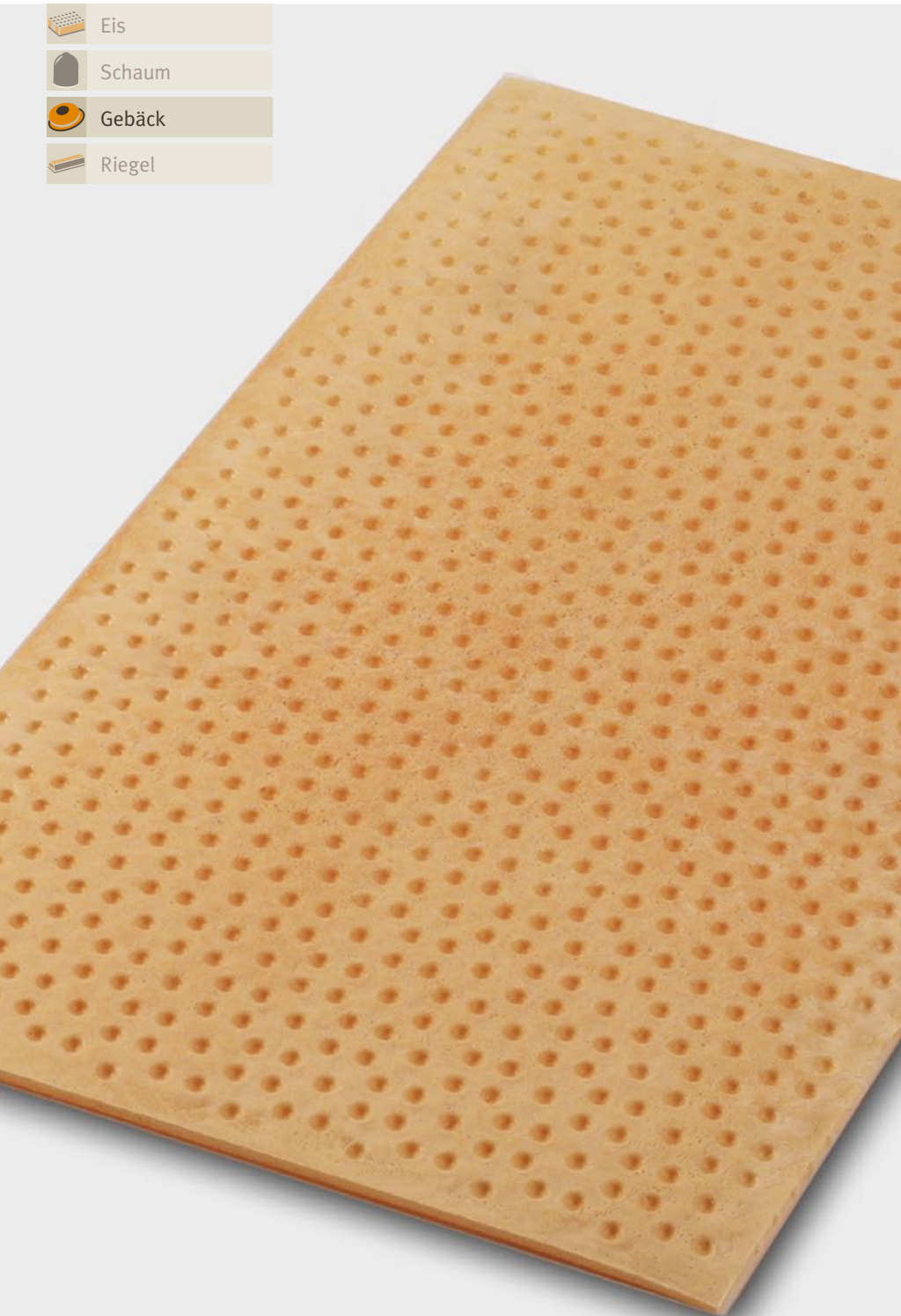




**Typische Anwendung**

-  Eis
-  Schaum
-  Gebäck
-  Riegel



Designwaffel ■ **Pünktchen Waffel (D PW)**

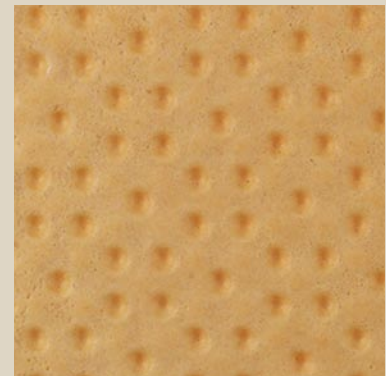
Blatt-Größe **ca. 290 x 460 mm**  
 Blatt-Gewicht **75 g** (Standard)  
 Blatt-Stärke **ca. 7 mm** (Standard)

Anwendungs-  
 details **Als Brot- oder  
 Keksartige Waffel**

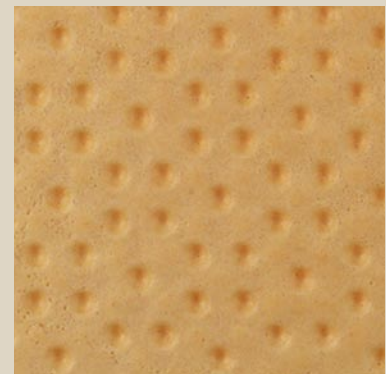
Anmerkung **Sonderausführung in  
 Gewicht und Stärke  
 möglich**

**1:1 Abbildung**

Vorderseite



Rückseite

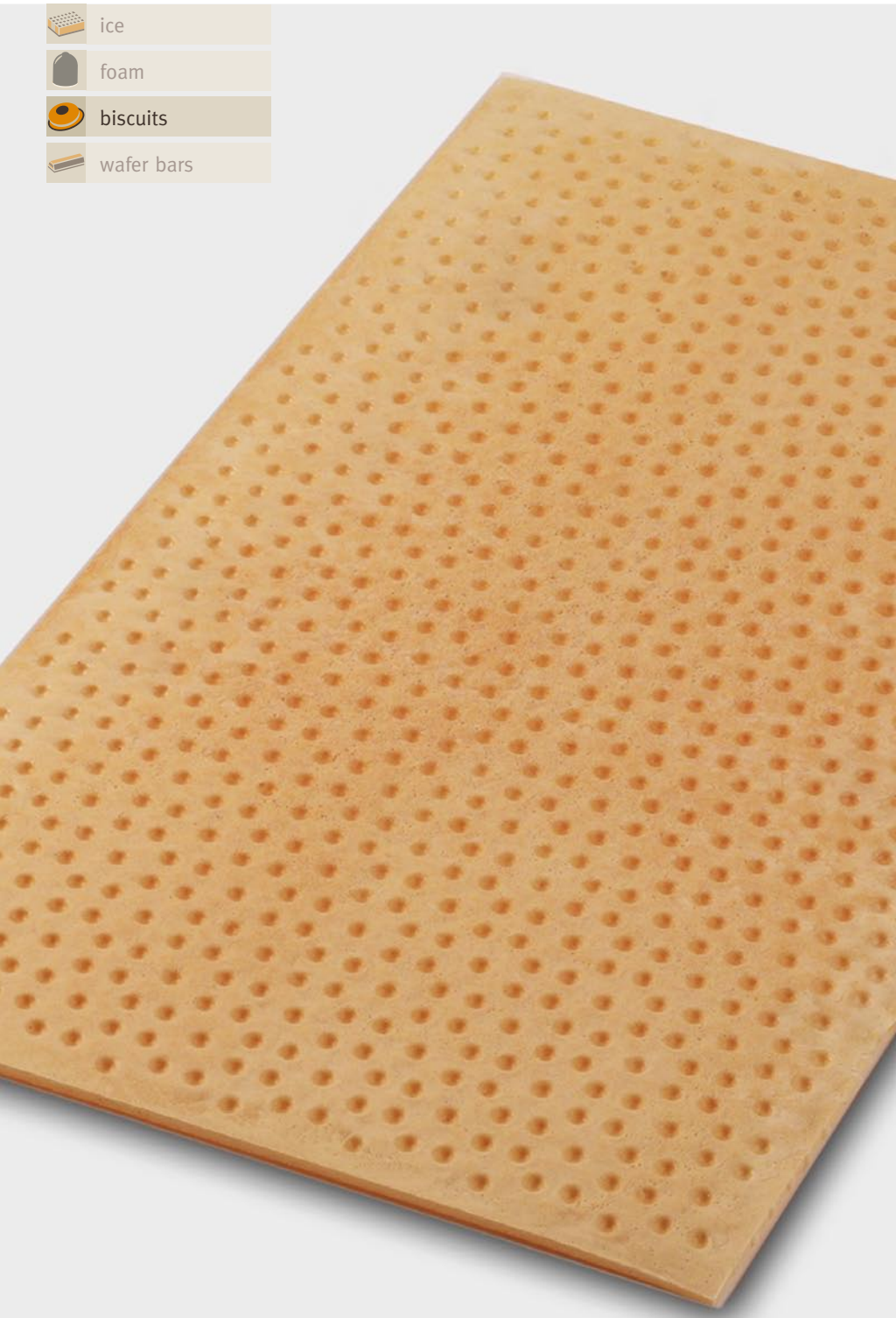


Tel. **+49 (0)6128 743-0**  
 Fax **+49 (0)6128 73685**  
[www.waffel-loeser.de](http://www.waffel-loeser.de)  
[info@waffel-loeser.de](mailto:info@waffel-loeser.de)



**typical usage**

-  ice
-  foam
-  biscuits
-  wafer bars



Design Wafer ■ **Dotted Wafer (D PW)**

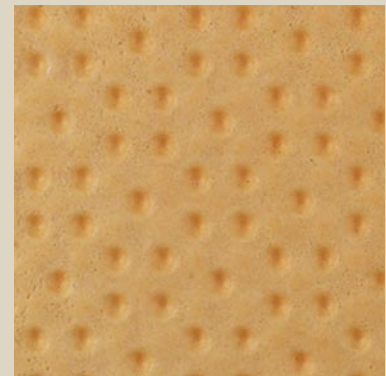
size of sheet     **appr. 290 x 460 mm**  
 weight             **appr. 75 g** (standard)  
 thickness         **appr. 7,0 mm** (standard)

typical applications     **product similar to biscuits**

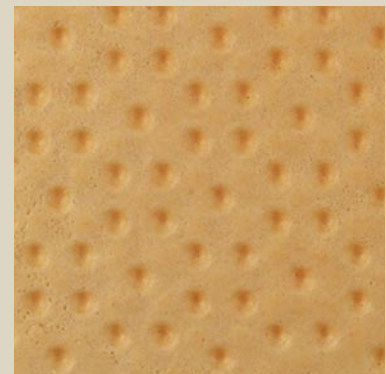
note                     **extra thickness and weight can be designed**

**1:1 image**

front side



back side



call     **+49 (0)6128 743-0**  
 fax     **+49 (0)6128 73685**  
          **www.waffel-loeser.de**  
          **info@waffel-loeser.de**